

INTD 272 Midterm Project



Monica Eng



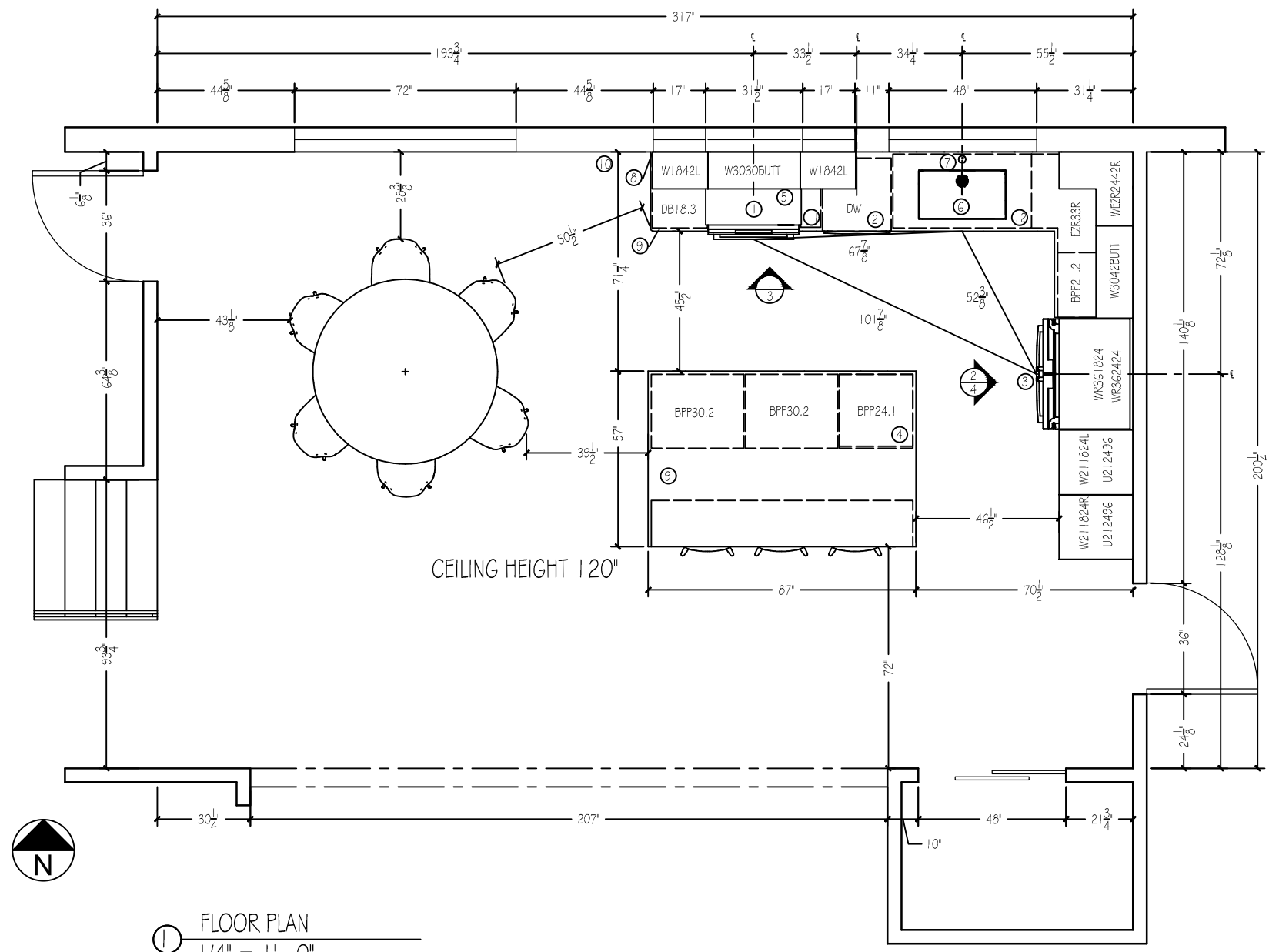
Design Statement

The clients, Howard and Tracy Redding, are recently married in their early 30s and live right outside of San Francisco. Howard likes modern and clean lines with smart-home technology. Tracy prefers texture and earthy elements. The primary challenge was to create a space that combined both of their wants. The proposed design for the remodel of their kitchen conforms to their needs and preferences by blending clean lines with warm and earthy touches. Some of the design decisions made are listed below:

- Clean lines for the cabinets and countertops for the modern aesthetic
- Warm maple cabinet material for an earthy feel with some wall cabinets with glass fronts to add variation
- Green colors and leaf-like shaped tiles in gradient backsplash to add to the earthy feel
- An L-shaped kitchen with an island creates an efficient kitchen flow
 - Two full height pantry cabinets are located directly to the right after entering through the garage door, allowing for quick and easy unloading and storing of dry pantry goods straight from the car
 - The smartphone/table connected refrigerator is located right next to the pantry cabinets, also positioned for easy unloading and storing of cold food items
 - The smart features of the refrigerator app include control of temperature, lighting adjustments, and diagnostics
- Stainless steel appliances, fixtures, and fittings
- Touch activated kitchen faucet with LED light indicator for temperature changes
- Pull-out drawer adjacent to sink for garbage, recycling, and compost bins for easy access when cleaning
- Narrow pull-out drawer for baking trays next to range
- Light gray quartz countertop with soft gray and white details that add a subtle texture
- An island features seating for three, extra prep space on kitchen work aisle side, and pull out storage drawers on the kitchen aisle side
 - A drawer microwave with push button open and close functionality is located directly under the island countertop above one of the pull-out drawers
 - Plenty of storage for pots and pans in other pull-out drawers in island, which is conveniently located directly across from range
- Ample space behind island for unobstructed flow from garage to living space without impacting the kitchen workflow
- White oak flooring to add a lighter element, but still warm enough color addition to the space
- Change of in-swing door to out-swing door from garage to provide more space inside kitchen area
- Addition of clerestory windows above cabinets to provide more light to the space

Concept Board





- FLOOR PLAN SPECIFICATIONS
- ① 30" INDUCTION SLIDE-IN RANGE
BRAND: BOSCH, MODEL: HUI8056U
 - ② 24" BAR HANDLE DISHWASHER
BRAND: BOSCH, MODEL: 5HX88PZ65N
 - ③ 36" COUNTER-DEPTH 3-DOOR REFRIGERATOR
BRAND: BOSCH, MODEL: B36CT80SN5
 - ④ 24" DRAWER MICROWAVE
BRAND: BOSCH, MODEL: HMD8451UC
 - ⑤ 30" PULL-OUT HOOD
BRAND: BOSCH, MODEL: HUI50351UC
 - ⑥ SINGLE BOWL SINK
BRAND: BLANCO, MODEL: 518172
 - ⑦ SINGLE HANDLE PULL-DOWN KITCHEN FAUCET
BRAND: BRIZO, MODEL: 6302OLF
 - ⑧ BACKSPLASH: FIRECLAY TILE, PICKET TILE IN JADE, SEA GLASS, AND CALCITE - PICKET BRAID PATTERN
 - ⑨ COUNTERTOPS: CAESARSTONE IN CLAMSHELL
 - ⑩ WALL PAINT: SHERWIN-WILLIAMS SNOWBOUND
 - ⑪ BPP6.1
 - ⑫ SB45

① FLOOR PLAN
1/4" = 1'-0"

ALL DIMENSIONS AND SIZE DESIGNATIONS GIVEN ARE SUBJECT TO VERIFICATION ON JOB SITE AND ADJUSTMENT TO FIT JOB CONDITIONS.



DESIGN PLANS ARE PROVIDED FOR THE FAIR USE BY THE CLIENT OR HIS AGENT IN COMPLETING THE PROJECT AS LISTED WITHIN THIS CONTRACT. DESIGN PLANS REMAIN THE PROPERTY OF THIS FIRM AND CAN NOT BE USED OR REUSED WITHOUT PERMISSION.

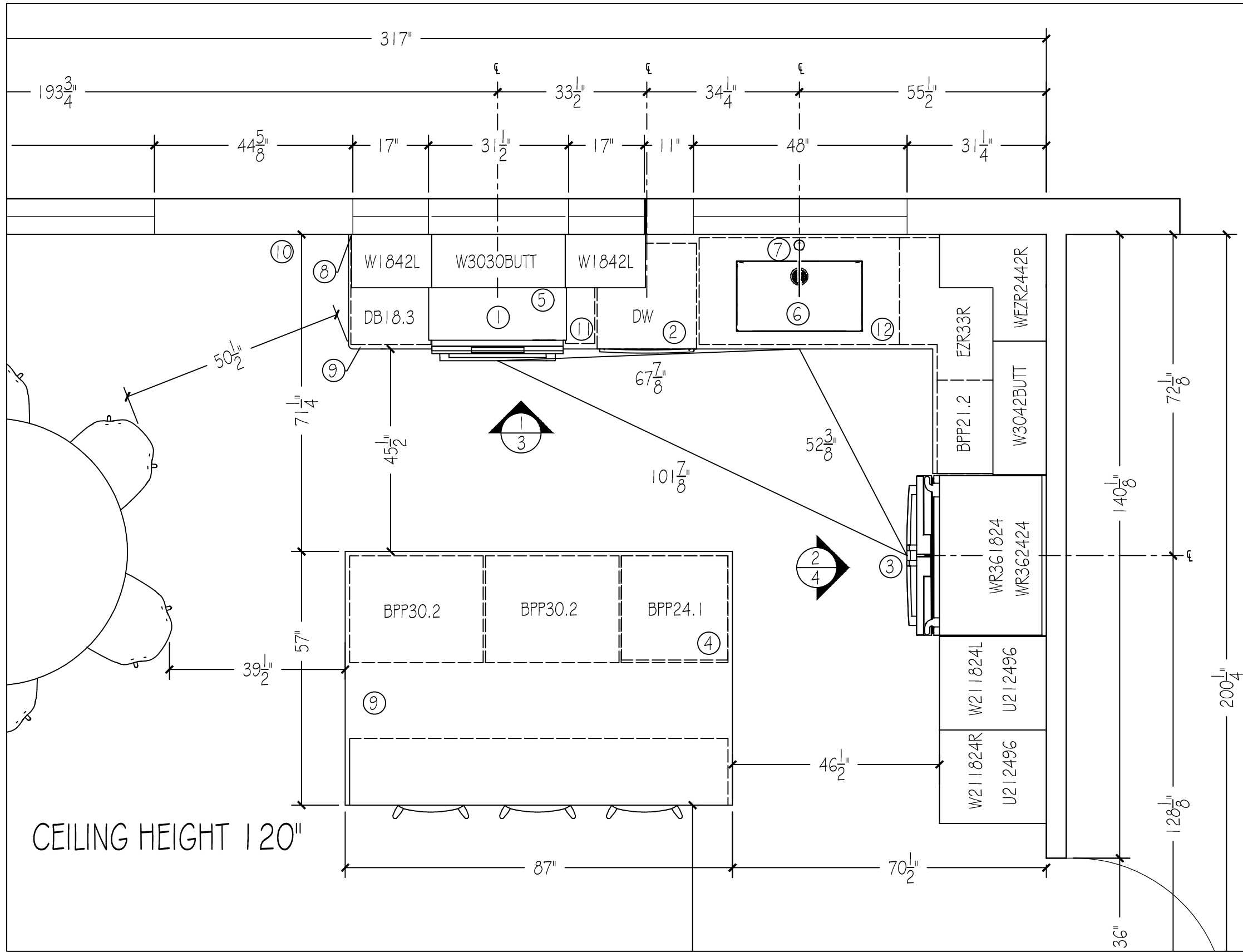
DESIGNED FOR:
HOWARD AND TRACY REDDING

BY:
MONICA ENG

	DATE	BY
DWN		
REV		

SCALE
1/4" = 1'-0"

DWG NO.
1



FLOOR PLAN SPECIFICATIONS

- ① 30" INDUCTION SLIDE-IN RANGE
BRAND: BOSCH, MODEL: H118056U
- ② 24" BAR HANDLE DISHWASHER
BRAND: BOSCH, MODEL: SHX88PZ65N
- ③ 36" COUNTER-DEPTH 3-DOOR REFRIGERATOR
BRAND: BOSCH, MODEL: B36CT805NS
- ④ 24" DRAWER MICROWAVE
BRAND: BOSCH, MODEL: HMD8451UC
- ⑤ 30" PULL-OUT HOOD
BRAND: BOSCH, MODEL: HUI50351UC
- ⑥ SINGLE BOWL SINK
BRAND: BLANCO, MODEL: 518172
- ⑦ SINGLE HANDLE PULL-DOWN KITCHEN FAUCET
BRAND: BRIZO, MODEL: G302OLF
- ⑧ BACKSPLASH: FIRECLAY TILE, PICKET TILE IN
JADE, SEA GLASS, AND CALCITE - PICKET BRAID
PATTERN
- ⑨ COUNTERTOPS: CAESARSTONE IN CLAMSHELL
- ⑩ WALL PAINT: SHERWIN-WILLIAMS SNOWBOUND
- ⑪ BPP6.1
- ⑫ SB45

ALL DIMENSIONS AND
SIZE DESIGNATIONS
GIVEN ARE SUBJECT TO
VERIFICATION ON JOB
SITE AND ADJUSTMENT
TO FIT JOB CONDITIONS.



DESIGN PLANS ARE PROVIDED FOR THE FAIR
USE BY THE CLIENT OR HIS AGENT IN
COMPLETING THE PROJECT AS LISTED WITHIN
THIS CONTRACT. DESIGN PLANS REMAIN THE
PROPERTY OF THIS FIRM AND CAN NOT BE
USED OR REUSED WITHOUT PERMISSION.

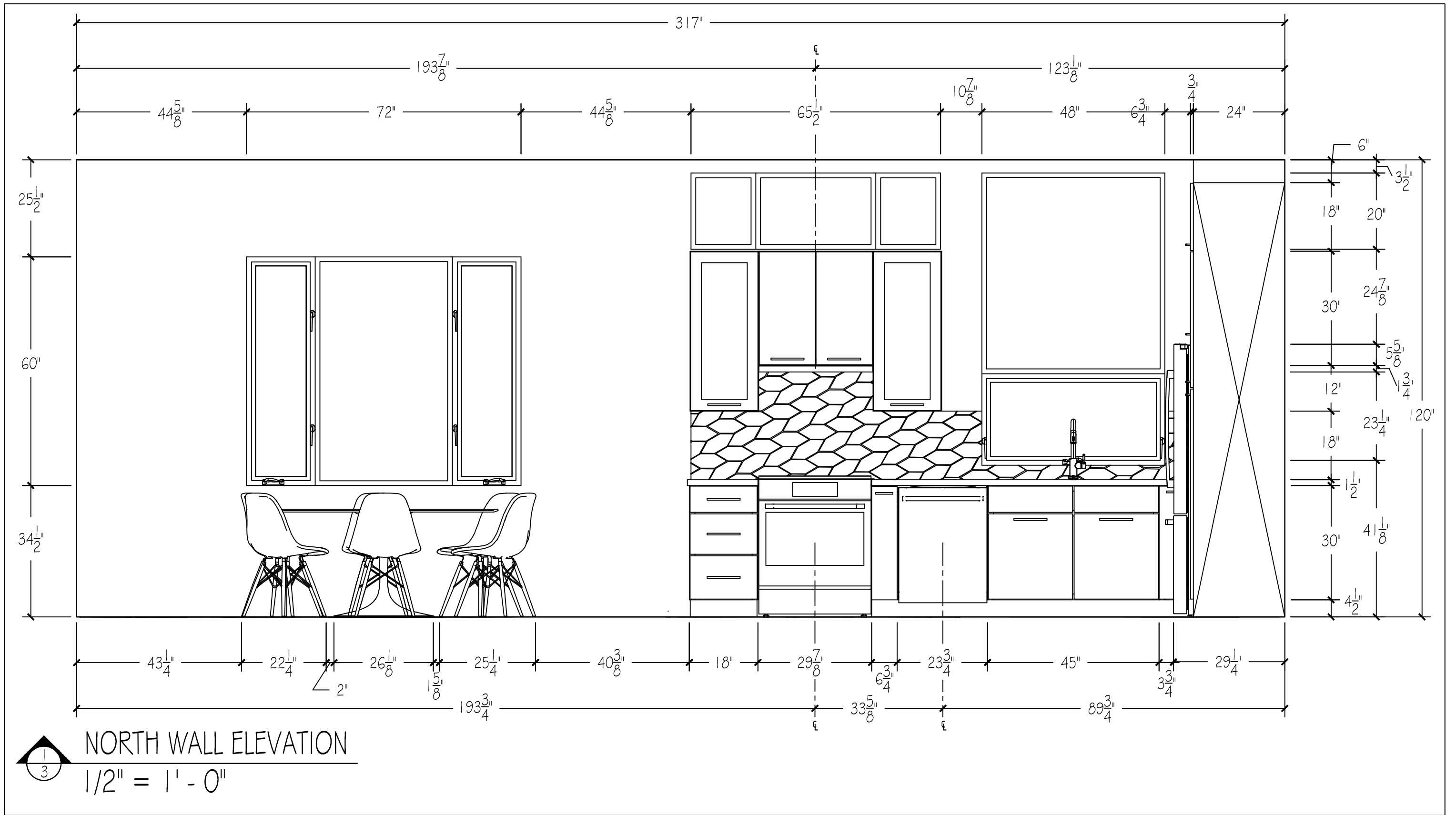
DESIGNED FOR:
HOWARD AND TRACY REDDING

BY:
MONICA ENG

	DATE	BY
DWN		
REV		

SCALE
1/2" = 1'-0"

DWG NO.
2



ALL DIMENSIONS AND SIZE DESIGNATIONS GIVEN ARE SUBJECT TO VERIFICATION ON JOB SITE AND ADJUSTMENT TO FIT JOB CONDITIONS.



DESIGN PLANS ARE PROVIDED FOR THE FAIR USE BY THE CLIENT OR HIS AGENT IN COMPLETING THE PROJECT AS LISTED WITHIN THIS CONTRACT. DESIGN PLANS REMAIN THE PROPERTY OF THIS FIRM AND CAN NOT BE USED OR REUSED WITHOUT PERMISSION.

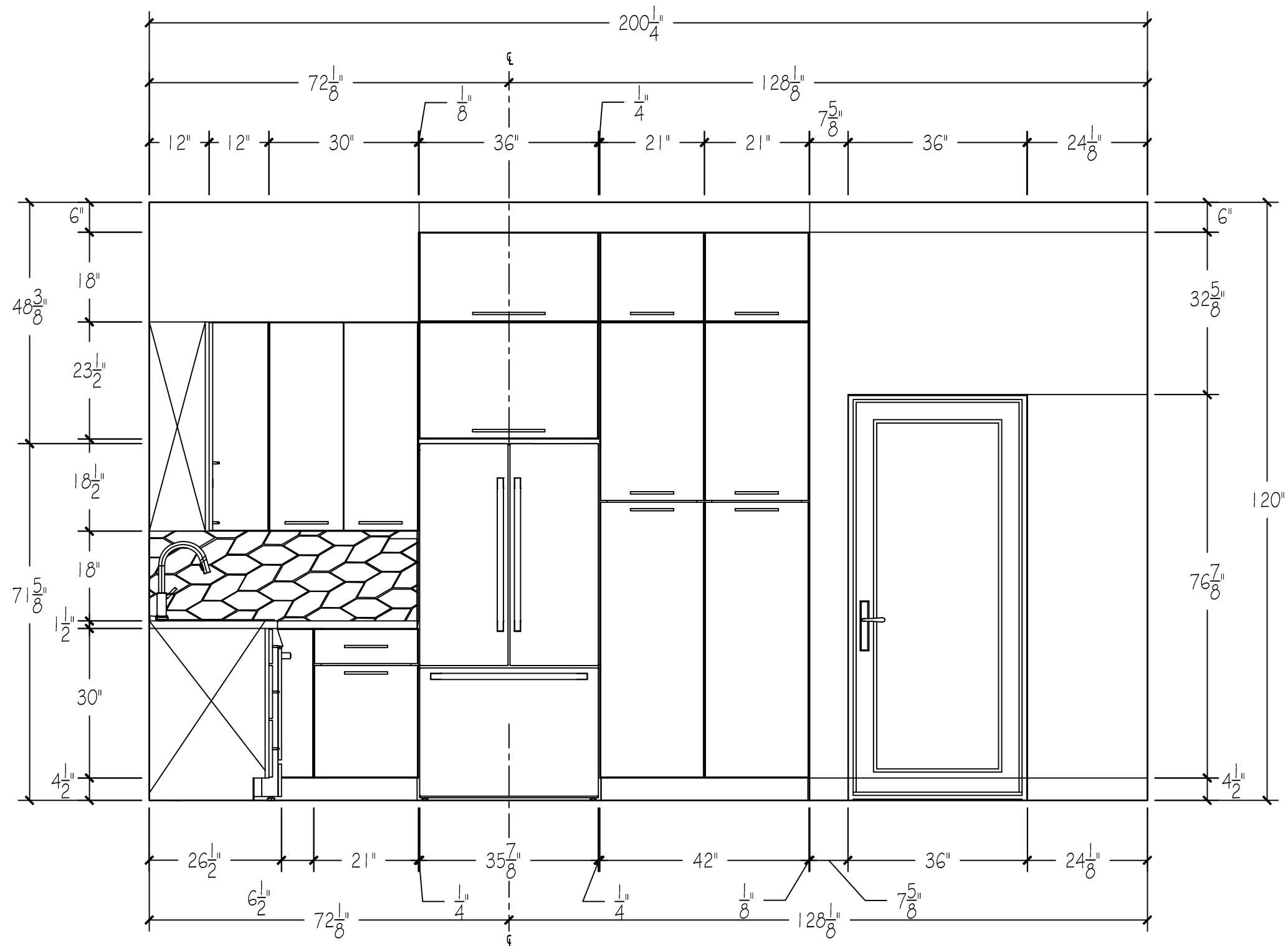
DESIGNED FOR:
HOWARD AND TRACY REDDING

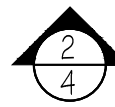
BY:
MONICA ENG

	DATE	BY
DWN		
REV		

SCALE
1/2" = 1'-0"

DWG NO.
3




EAST WALL ELEVATION
 1/2" = 1' - 0"

ALL DIMENSIONS AND SIZE DESIGNATIONS GIVEN ARE SUBJECT TO VERIFICATION ON JOB SITE AND ADJUSTMENT TO FIT JOB CONDITIONS.



DESIGN PLANS ARE PROVIDED FOR THE FAIR USE BY THE CLIENT OR HIS AGENT IN COMPLETING THE PROJECT AS LISTED WITHIN THIS CONTRACT. DESIGN PLANS REMAIN THE PROPERTY OF THIS FIRM AND CAN NOT BE USED OR REUSED WITHOUT PERMISSION.

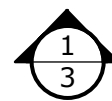
DESIGNED FOR:
HOWARD AND TRACY REDDING

BY:
MONICA ENG

	DATE	BY
DWN		
REV		

SCALE
1/2" = 1'-0"

DWG NO.
4



ELEVATION - COLOR

1/2" = 1'-0"

ALL DIMENSIONS AND SIZE DESIGNATIONS GIVEN ARE SUBJECT TO VERIFICATION ON JOB SITE AND ADJUSTMENT TO FIT JOB CONDITIONS.



DESIGN PLANS ARE PROVIDED FOR THE FAIR USE BY THE CLIENT OR HIS AGENT IN COMPLETING THE PROJECT AS LISTED WITHIN THIS CONTRACT. DESIGN PLANS REMAIN THE PROPERTY OF THIS FIRM AND CAN NOT BE USED OR REUSED WITHOUT PERMISSION.

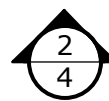
DESIGNED FOR:
HOWARD AND TRACY REDDING

BY:
MONICA ENG

	DATE	BY
DWN		
REV		

SCALE
1/2" = 1'-0"

DWG NO.
5



ELEVATION - COLOR

1/2" = 1'-0"

ALL DIMENSIONS AND SIZE DESIGNATIONS GIVEN ARE SUBJECT TO VERIFICATION ON JOB SITE AND ADJUSTMENT TO FIT JOB CONDITIONS.



DESIGN PLANS ARE PROVIDED FOR THE FAIR USE BY THE CLIENT OR HIS AGENT IN COMPLETING THE PROJECT AS LISTED WITHIN THIS CONTRACT. DESIGN PLANS REMAIN THE PROPERTY OF THIS FIRM AND CAN NOT BE USED OR REUSED WITHOUT PERMISSION.

DESIGNED FOR:
HOWARD AND TRACY REDDING

BY:
MONICA ENG

	DATE	BY
DWN		
REV		

SCALE
1/2" = 1'-0"

DWG NO.
6



ALL DIMENSIONS AND SIZE DESIGNATIONS GIVEN ARE SUBJECT TO VERIFICATION ON JOB SITE AND ADJUSTMENT TO FIT JOB CONDITIONS.



DESIGN PLANS ARE PROVIDED FOR THE FAIR USE BY THE CLIENT OR HIS AGENT IN COMPLETING THE PROJECT AS LISTED WITHIN THIS CONTRACT. DESIGN PLANS REMAIN THE PROPERTY OF THIS FIRM AND CAN NOT BE USED OR REUSED WITHOUT PERMISSION.

DESIGNED FOR:

HOWARD AND TRACY REDDING

BY:

MONICA ENG

	DATE	BY
DWN		
REV		

SCALE

NOT TO SCALE

DWG NO.

7



ALL DIMENSIONS AND
 SIZE DESIGNATIONS
 GIVEN ARE SUBJECT TO
 VERIFICATION ON JOB
 SITE AND ADJUSTMENT
 TO FIT JOB CONDITIONS.



DESIGN PLANS ARE PROVIDED FOR THE FAIR
 USE BY THE CLIENT OR HIS AGENT IN
 COMPLETING THE PROJECT AS LISTED WITHIN
 THIS CONTRACT. DESIGN PLANS REMAIN THE
 PROPERTY OF THIS FIRM AND CAN NOT BE
 USED OR REUSED WITHOUT PERMISSION.

DESIGNED FOR:

HOWARD AND TRACY REDDING

BY:

MONICA ENG

	DATE	BY
DWN		
REV		

SCALE
 NOT TO SCALE

DWG NO.
 8